

City of London School

Case Study: Penetration Testing

Ensuring External Infrastructure Remains Secure and Free From Vulnerabilities

Company Profile:

Situated in the heart of London, City of London School was founded in 1442. The School is renowned for its high level of achievement, excellent examination results, and impressive progression to top universities.

City of London School prides itself upon the diversity of its community, reflecting as it does the social and cultural breadth of London. The School provides day education to about 940 pupils aged 10 to 18 and employs approximately 100 teaching staff and around another 50 non-teaching staff.

The Challenge

As part of its Information Technology mission, modernising communications was vital for City of London School. The pace of technological change in the education sector offers opportunities for the School to develop its practice of excellence in teaching and learning. However, with this pace of change, City of London School are increasingly aware of cyber criminals and the risk associated. Protecting sensitive pupil data at City of London School has never been more important.

As part of an internal audit, Joe Matthews (IT Manager) identified testing as a key priority to ensure their existing systems are secure.

At a Glance

City of
London
School

Industry:

Education

The Challenge:

To ensure City of London School were free from vulnerabilities whilst optimising the existing security strategy

Solution:

Penetration testing conducted on externally facing infrastructure

Benefits:

- Mitigate data leakage risk
- Optimisation of security strategy
- Increased cyber-security awareness
- Auditory requirements achieved
- Actionable remediation post testing

Case Study: City of London School, Penetration Testing

The Solution

As part of the proactive drive to consistently optimise and validate the security strategy, City of London School turned to MTI Technology. City of London School engaged with MTI to conduct penetration testing on externally facing infrastructure such as routers, web and mail servers.

As a cloud-first organisation, City of London School understood the need to ensure their external infrastructure was secure. MTI understood City of London School's need to consistently optimise their security posture. Protecting and managing their data securely is a priority for the school.



As a school, the aspect of security requires peace of mind, we need organisations like MTI to help and be a responsive and consultative security partner

**Joe Matthews, IT Manager
City of London School**

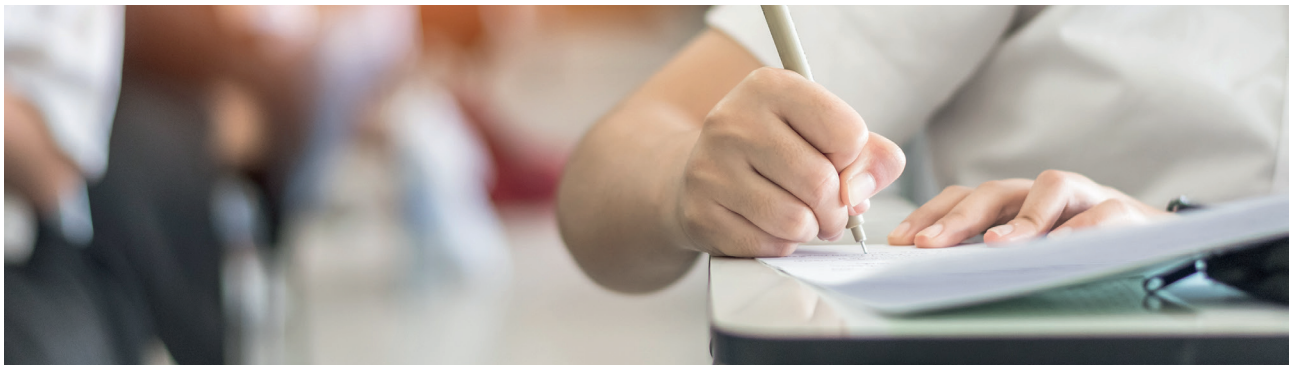


Why MTI?

City of London School was aware of MTI as a well-known Data and Security Solutions provider following their work with their partner, City of London School for Girls. The School required a partner to provide expert advice coupled with the ability to deliver an efficient service.

Once testing was complete, an in-depth analysis was provided to ensure any high-risk aspects were identified and appropriately remediated. In addition, City of London School could make educated decisions on how to update their security posture based upon data produced from testing.

Optimising the existing security posture of existing IT systems could reduce the likelihood of an attack being successful. The clear, concise and easy to understand reports produced by MTI were also highlighted by City of London school as a key benefit to MTI's penetration testing services.



**Datacentre &
Cloud**



**Managed
Services**



Security

